

Claremont Colleges

Scholarship @ Claremont

CGU MFA Theses

CGU Student Scholarship

Spring 5-16-2020

Intimate

Jason Brewer

Follow this and additional works at: https://scholarship.claremont.edu/cgu_mfatheses



Part of the [Art Practice Commons](#)

Recommended Citation

Brewer, Jason, "Intimate" (2020). *CGU MFA Theses*. 182.
https://scholarship.claremont.edu/cgu_mfatheses/182

This Thesis is brought to you for free and open access by the CGU Student Scholarship at Scholarship @ Claremont. It has been accepted for inclusion in CGU MFA Theses by an authorized administrator of Scholarship @ Claremont. For more information, please contact scholarship@cuc.claremont.edu.



Intimate





Intimate

Jason Brewer
MFA Thesis Exhibition

East Gallery - Claremont Graduates University
251 East Tenth Street
Claremont, CA 91711
Gallery hours Monday - Friday 10am - 5pm

Exhibition Dates: Feb 17 - 21, 2020
Opening Reception, Feb 18, 6pm - 9pm
Artist Talks: 7pm - 8pm



Intimate

The paintings of the show branch from an investigation of presenting the darker more private side of human states. To give abstract form to something that has no form. To use seducing whispers to confine viewers to become intimate with the work and themselves. To open up to such vulnerability that it becomes a natural acceptance in life not something sheltered; to cry when it hurts, scream when angry, to call for help when lost or trapped, to feel passionate. To embrace everything one is, including the dark, is to be whole.

The Imagery I create with these works are result of the explorations of my intimate feelings; they are my emotions and thoughts brought to physical form. I've used the paint as a substitute for myself to engage viewers to identify their interpretations and similar experience with emotional and mental states. Using texture and movement with the strokes of paint that mimics gestures of, and colors associate with, the mental states in order to present a visual sensory of emotions and psychological states; like the gravity of being in a depressed state, the itchiness and blood red feelings of frustration, the emptiness of being alone, the encroaching pressure of stress, and the weightless haze of confusion. The paintings become an intimate bridge between individuals and a sense of themselves and others. However, they're meant to be guiding lines and are open to interpretations. They're merely my observations of the closely guarded aspects of ourselves we only share with the intimate ones in our lives. They are an exploration of forming intimate bridges with others and an embrace of what make us who we are.

Jason Brewer

Jason Brewer

Intimate

East Gallery Claremont Graduate University

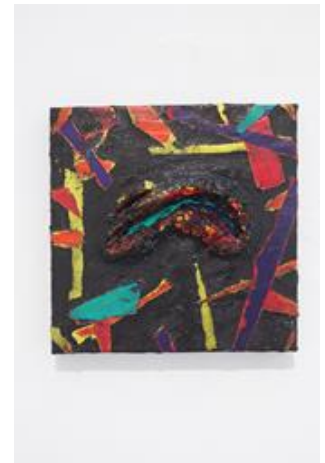
February 17-21, 2020

1. Jason Brewer

"Untitled 1", 2019

Oil paint on canvas

12 x 12" [HxW]



2. Jason Brewer

"Untitled 2", 2019

Oil paint on fused wood panels

16 x 17" [HxW]



3. Jason Brewer

"Untitled 3", 2019

Oil paint and string on Aluminum cradled panel

14 x 11" [HxW]



4. Jason Brewer

"Untitled 4", 2019

Oil paint on wood panel

12 x 9", [HxW]



5. Jason Brewer

"Untitled 5", 2019

Oil paint on wood panel

12 x 9", [HxW}



6. Jason Brewer

"Untitled 6", 2019

Oil paint and string on wood panel

12 x 12", [HxW}



7. Jason Brewer

"Untitled 7", 2020

Oil paint on wood panel

8 3/4 x 10", [HxW}

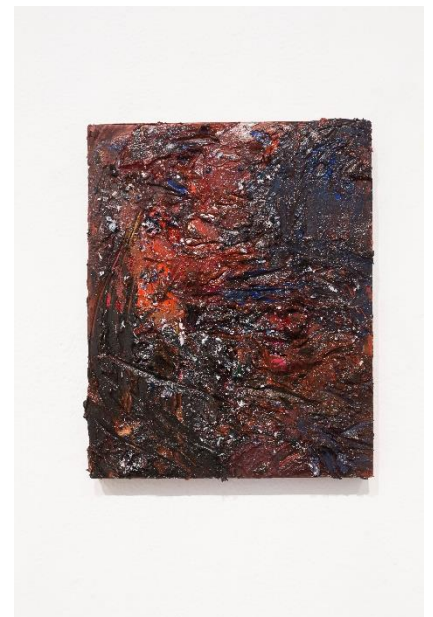


8. Jason Brewer

"Untitled 8", 2020

Oil paint on wood panel

10 x 8", [HxW}

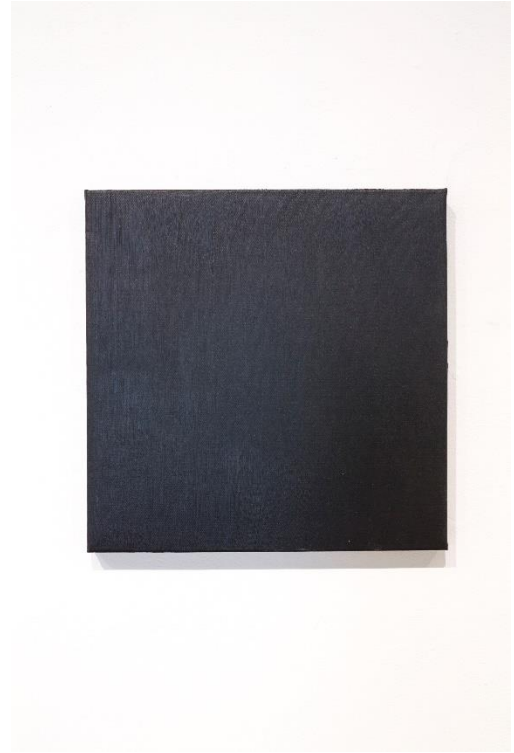


9. Jason Brewer

"Untitled 9", 2019

Oil paint on canvas

16 x 16", [HxW}



10. Jason Brewer

"Untitled 10", 2019

Oil on wood panel

12 x 24", [HxW}



11. Jason Brewer

"Untitled 11", 2019

Oil on Canvas

12 x 12", [HxW}



12. Jason Brewer

"Untitled 12", 2019

Oil on Canvas

22 x 16", [HxW}



13. Jason Brewer

"Untitled 13", 2020

Oil on wood panel

20 x 16", [HxW]



14. Jason Brewer

"Untitled 14", 2020

Oil on wood panel

8 x 8", [HxW]

