

Aliso: A Journal of Systematic and Evolutionary Botany

Volume 17 | Issue 1

Article 2

1998

Insert 17

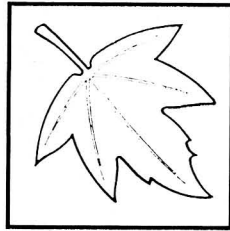
Follow this and additional works at: <http://scholarship.claremont.edu/aliso>

Recommended Citation

(1998) "Insert 17," *Aliso: A Journal of Systematic and Evolutionary Botany*: Vol. 17: Iss. 1, Article 2.
Available at: <http://scholarship.claremont.edu/aliso/vol17/iss1/2>

ALISO

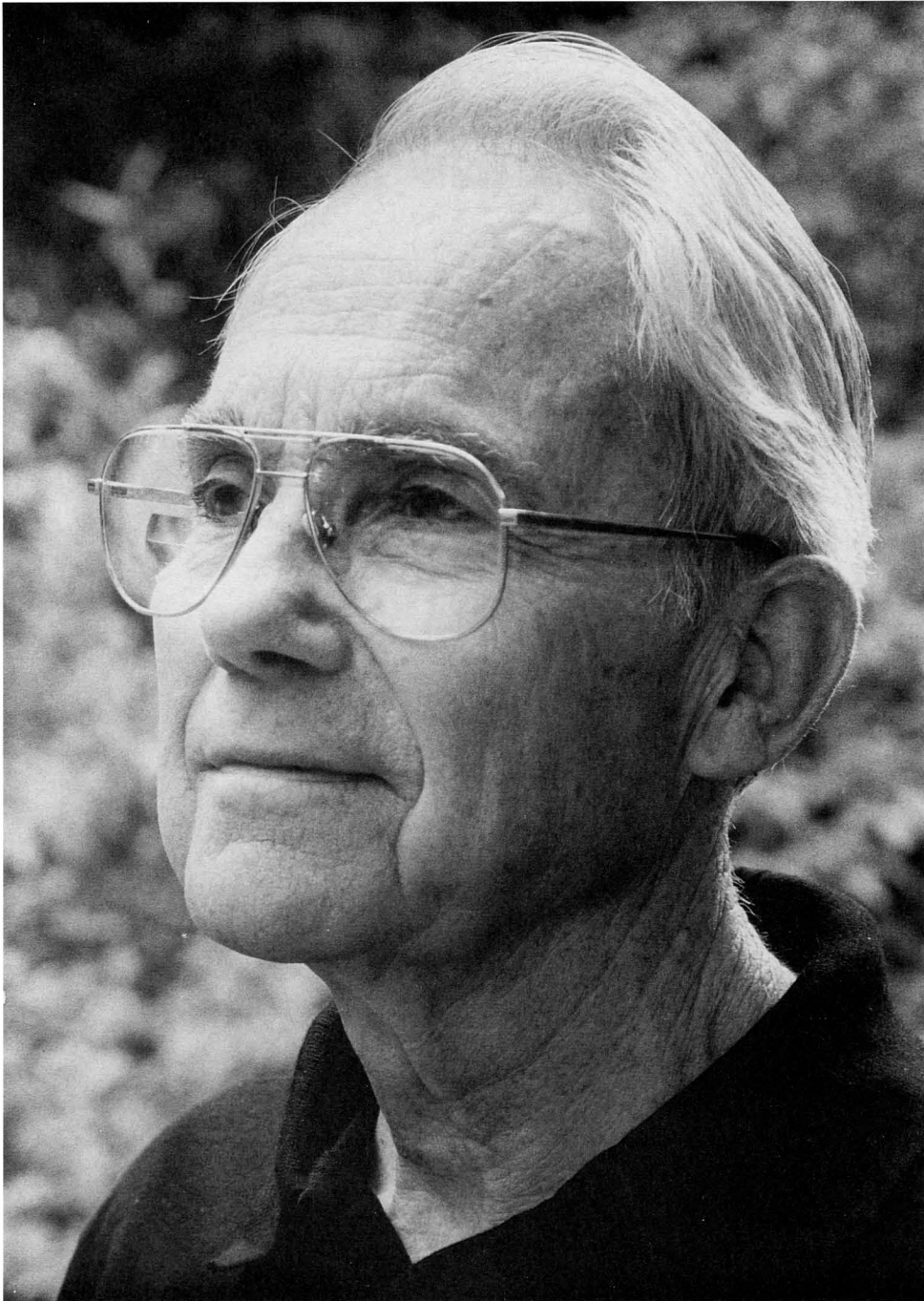
RANCHO SANTA ANA BOTANIC GARDEN



VOLUME 17
1998

PUBLISHED BY
THE RANCHO SANTA ANA BOTANIC GARDEN

Claremont, California



Volume 17 of *Aliso* is dedicated to
Dr. Richard K. Benjamin,
who has served as Editor-in-Chief since 1958 and continues in this capacity.
Rancho Santa Ana Botanic Garden and the contributors to *Aliso*
salute him for his dedication and high editorial standards during these years.

PRINTED IN THE UNITED STATES OF AMERICA

by ALLEN PRESS, INC.

LAWRENCE, KANSAS

TABLE OF CONTENTS

No. 1, June 8, 1998

Aliso—50 years!		<i>i</i>
Laboulbeniales on semiaquatic Heteroptera. VII. Addenda to species of <i>Triceromyces</i> of Hydrometridae and further observations on dioecism in the order	Richard K. Benjamin	1
<i>Aliciella</i> , a recircumscribed genus of Polemoniaceae	J. Mark Porter	23
A floristic study in the Diamond Creek drainage area, Gila National Forest, New Mexico	Eric H. Roalson and Kelly W. Allred	47
Wood anatomy of Calyceraceae with reference to ecology, habit, and systematic relationships	Sherwin Carlquist and Melanie L. DeVore	63
Ecophysiological observations on Lane Mountain milkvetch, <i>Astragalus jaegerianus</i> (Fabaceae), a proposed endangered species of the Mojave Desert	Arthur C. Gibson, M. Rasoul Sharifi, and Philip W. Rundel	77
Nomenclatural changes in Polemoniaceae	J. Mark Porter	83
Instructions for contributors	backmatter	<i>iii</i>
Checklist for preparation of manuscripts and illustrations	backmatter	<i>vii</i>

No. 2, December 1, 1998

Evolution and Taxonomy of Southwestern Plants. Thirteenth Annual Southwestern Botanical Systematics Symposium. Rancho Santa Ana Botanic Garden. May 23–24, 1997

Introduction	J. Travis Columbus	87
Phylogeny and adaptation in the <i>Encelia</i> alliance (Asteraceae: Heliantheae)	Curtis Clark	89
Cladistic parsimony analysis of internal transcribed spacer region (nrDNA) sequences of <i>Bouteloua</i> and relatives (Gramineae: Chloridoideae)	J. Travis Columbus, Michael S. Kinney, Rashmi Pant, and Maria Elena Siqueiros Delgado	99
Cheilanthoid ferns (Pteridaceae: Cheilanthoideae) in the southwestern United States and adjacent Mexico—a molecular phylogenetic reassessment of generic lines	Gerald J. Gastony and David R. Rollo	131
A coalescent approach to chloroplast genome relationships within and between populations of <i>Pinus devoniana</i> in Mexico	Jennifer A. Matos	145
Phylogenetic relationships of Polemoniaceae: inferences from mitochondrial <i>nad1b</i> intron sequences	J. Mark Porter and Leigh A. Johnson	157
Plant systematics: beginnings and endings	Billie L. Turner	189

New names and combinations in <i>Encelia frutescens</i> sensu lato (Asteraceae: Heliantheae)	Curtis Clark	201
<i>Arabis hirshbergiae</i> (Brassicaceae), a narrow endemic from the Cuyamaca Mountains, San Diego County, California	Steve Boyd	203
Reviewers of manuscripts		207
Index to Volume 17, Aliso		209