

# Aliso: A Journal of Systematic and Evolutionary Botany

---

Volume 9

Issue 1 *Rancho Santa Ana Botanic Garden—The First  
Fifty Years, 1927–1977*

Article 16

---

1977

## Appendix I

Lee W. Lenz

*Rancho Santa Ana Botanic Garden, Claremont, California*

Follow this and additional works at: <http://scholarship.claremont.edu/aliso>



Part of the [Botany Commons](#), and the [Horticulture Commons](#)

---

### Recommended Citation

Lenz, Lee W. (1977) "Appendix I," *Aliso: A Journal of Systematic and Evolutionary Botany*: Vol. 9: Iss. 1, Article 16.  
Available at: <http://scholarship.claremont.edu/aliso/vol9/iss1/16>

## APPENDIX I

The Nature, Object and Purpose of the Institution  
Hereby Founded and to be Maintained Hereunder.

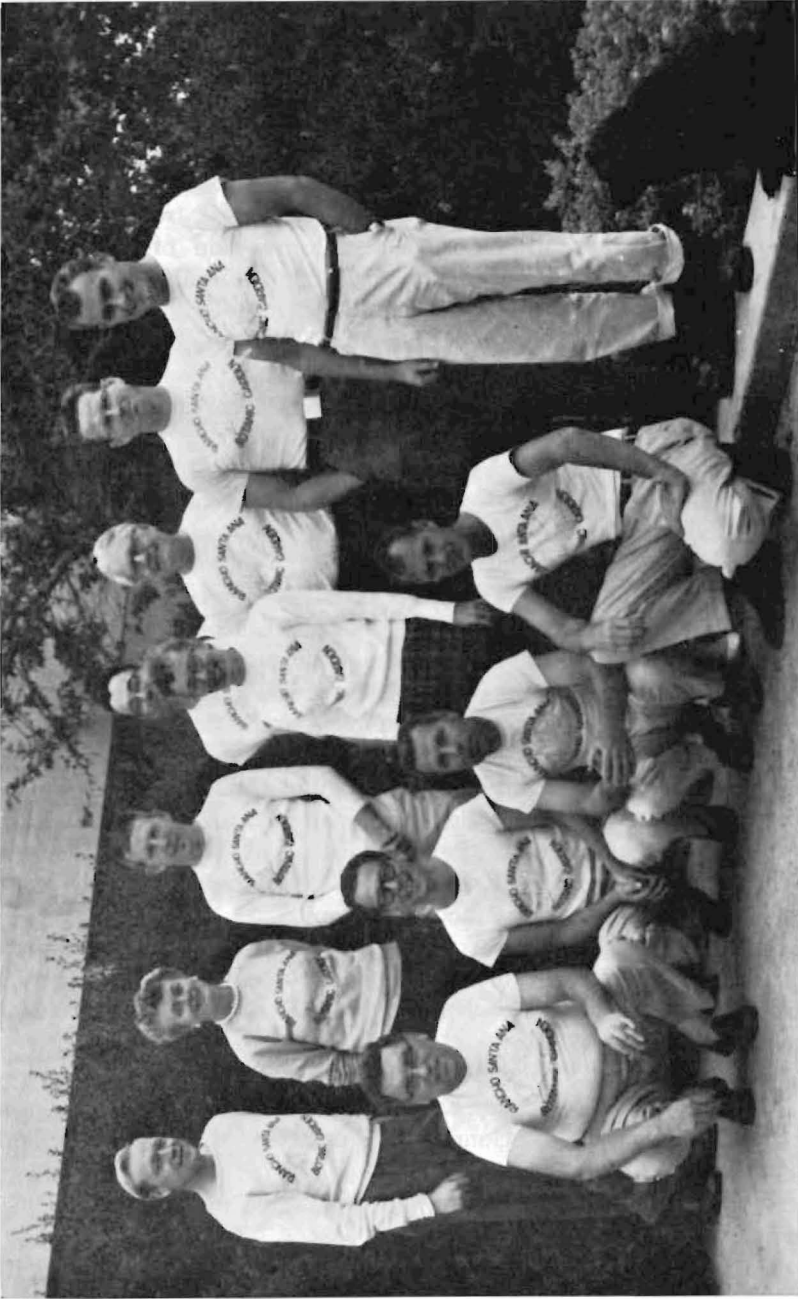
Its NATURE: A botanic garden of the native plants of California, herbarium and botanical library, containing living and or preserved specimens of trees, plants and flowers native to California, and literature relating thereto.

Its OBJECT: The preservation and improvement of the property now transferred and such property as may hereafter be transferred to the Trustees for those who not only wish to enjoy, but to study, assembled in one accessible locality, native California plants; and for the advancement of science and education with reference to plant life indigenous to the State of California.

Its PURPOSES: (a) An institution founded primarily for scientific research in the field of local botany.

(b) To preserve the native California flora, try to replenish the depleted supply of some of the rarest plants which are rapidly being exterminated, and bring together in a comparatively small area as complete a collection of the rich store of native California plants as can be grown in the southern section of the state, thereby promoting the general welfare of the people of the state by providing the means for encouraging and carrying on the above mentioned activities in said state and by doing such other things as may be necessary and desirable to carry out the objects hereof.

APPENDIX I



Staff and students, March 1957. Standing, from the left: Sherwin Carlquist, Elizabeth Sprague, unidentified, Richard Benjamin, Doris Ruppel, Philip Munz, James Davis, Calaway Dodson; bottom row, Homer Metcalf, Steven Tillett, Lee Lenz, Verne Grant, and the Munz's dog, Prince.